

# Hong Kong GIS Association 香港地理信息系統學會

## GIS TECHNOLOGY UPDATE SEMINAR

Date: July 21 2004 (Wednesday)  
Time: 14:00 p.m. – 18:00 p.m.  
Venue: Room Annapurna  
Pacific Place Conference Centre  
5/F One Pacific Place  
88 Queensway  
Hong Kong

The HKGISA (Hong Kong Geographic Information System Association) is organising a half-day GIS Technology Update Seminar on July 21 2004, with the aims to introduce the recent technological advancement in GIS to our members. The Seminar will emphasis on the new development in GIS, and provide an opportunity for GIS product suppliers and users to exchange ideas and information on the latest development. The Seminar is intended for users of different disciplines, and we had invited dominant GIS vendors and product suppliers to participate in the event.

### **Speakers**

Bentley Hong Kong Limited	Bentley Extreme Mapping
ESRI China (Hong Kong) Limited	ArcGIS 9: The Complete GIS
Intergraph Hong Kong Limited	An Integrated Transport Solution (provisional)
Mappa Systems Limited	Geo-Enabling your Mobile Applications
MapAsia.com	From MapKing to National Level Business Planning in China with MapInfo based ChinaInfoMap
Smartal Solutions Limited	Micro Planning – Neighbourhood Profiling in China's Top Tier Cities including Hong Kong

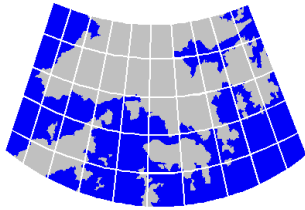
### **Registration**

The Seminar is **Free** for all. If you are interested, please send email to [mail@hkgisa.org.hk](mailto:mail@hkgisa.org.hk) with subject 'GIS Technology Update Seminar Registration' and the following details for registration:

- 1) Name of attendee
- 2) Company name
- 3) Contact telephone number
- 4) Email address
- 5) HKGISA Member 2004 or Non-HKGISA Member

Or complete the attached enrollment form and send by fax to (852) 2815 7327. I look forward to your participation and support in the event.

Yours Sincerely,  
Lorraine Chu



# Hong Kong GIS Association 香港地理信息系統學會

## GIS TECHNOLOGY UPDATE SEMINAR

### Enrolment Form

*Kindly complete and fax to Ms. Lorraine Chu (Fax No: 2815 7327).*

Name: (Mr./Mrs./Ms./Dr.): \_\_\_\_\_

Company Name: \_\_\_\_\_

Contact Telephone No: \_\_\_\_\_

Email Address: \_\_\_\_\_

### **HKGISA Member 2004 (Please tick if appropriate):**

Full Member

Non-Member      and  I wish to join HKGISA

### Co-Sponsors



**ESRI** China • HK

